



Experiencing therapeutic foster care
in the Italian context: a community
and family based approach





REGULATORY FRAMEWORK

- **Convention on the Rights of the Child**
- **Law 47/2017**
- **Italian laws on foster care**





CONTEXT

As of October 31 2024, the Italian reception system recorded 19,215 Unaccompanied Foreign Minors (UFM); in the broader context of migration, children and adolescents who arrive in Italy via the Mediterranean or other routes without their families represent a particularly vulnerable group.

- Minors between the ages of 14 and 17, mostly males
- Placed in reception centers for minors



FOSTER CARE

Foster care is part of the minor's individualized educational plan.

Foster care is not for everyone, but it is important for everyone to be placed in a supportive family context of care.





INTEGRATED PRACTICE MODEL FOR THE FOSTER CARE OF UFM

TRAINING

MATCHING

SUPPORT



TRAINING

OBJECTIVES:

1. To inform
2. To stimulate reflection, including on an emotional level, while engaging with these topics (on an individual and couple level)
3. To create a network

METHODOLOGY

Theoretical-experiential
(informational
material/deepening +
role-playing, focus
groups, sharing sessions,
etc.)

INTEGRATED TRAINING

TEAM :

Public Social Worker
Psychologist/Psychotherapist
Professional Educator
Experienced Foster Family/ies
with a tutoring role.

STRUCTURE

Introduction
Initial Motivation
Laws on Foster Care
The Minor and Their World UAM
(Paths, Expectations, Profiles)
The Birth Family
The Foster Family
Different Forms of Solidarity
The Educational Project
Networking
Motivations for Reception



INTEGRATED MATCHING PROCESS

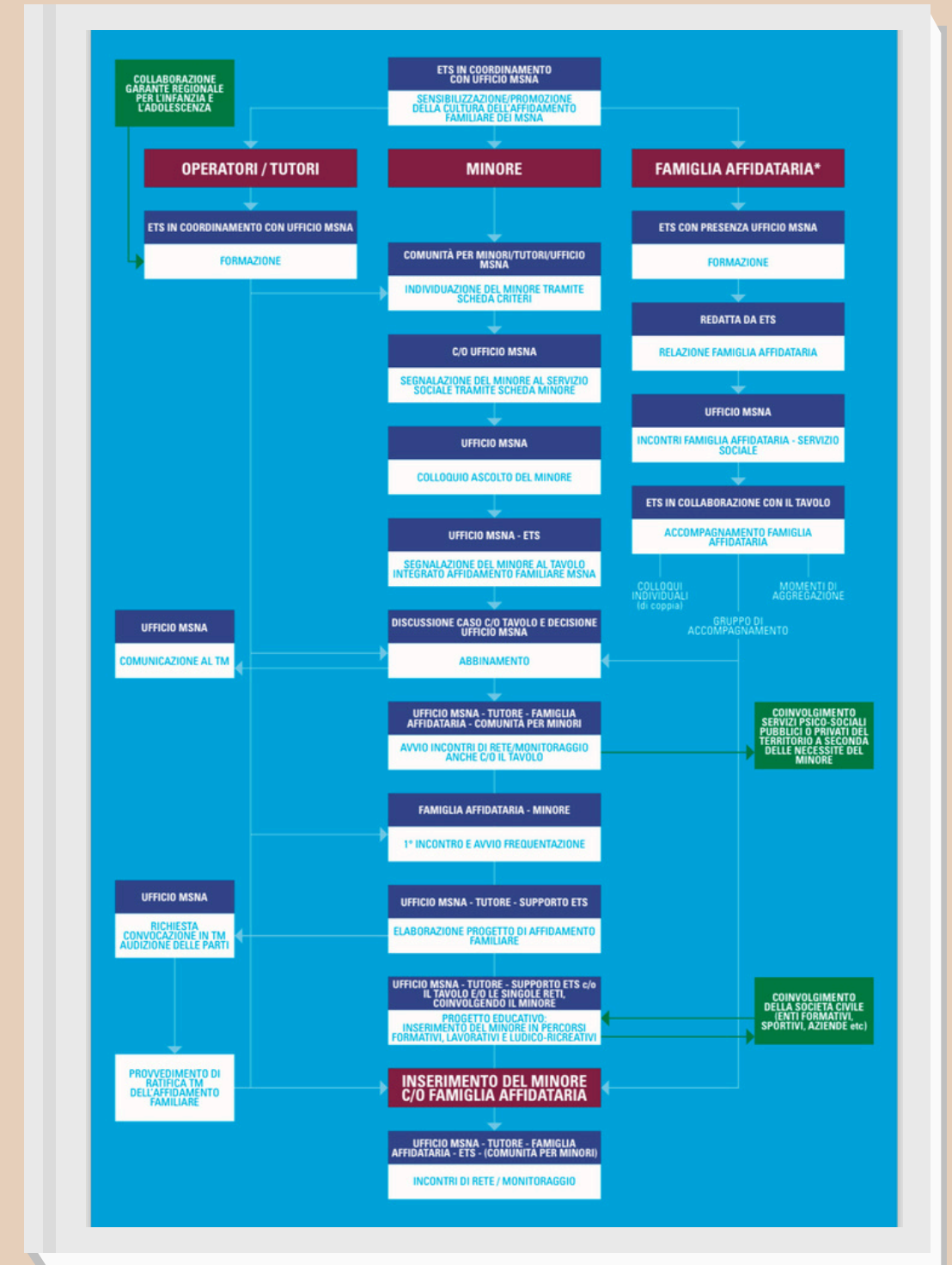
In reference to the Flow Diagram

NETWORKING
MONITORING

CARE and GRADUALNESS

DEVELOPMENT of FOSTER
CARE/SOLIDARITY PROJECT

DEVELOPMENT OF THE
MINOR'S EDUCATIONAL
PLAN





SUPPORT

- Psychopedagogical interviews for individual support;
- Support groups for families;
- Support for the relationship with services and the minor's reference network;
- Ongoing training;
- Family integration;
- Support for the educational community.





PROTECTIVE FACTORS

for the life journey of the young people
for the successful outcome of the foster
care process

- Family context (foster care or family solidarity)
- Support
- Network and support of families
- Networking between professionals and family
- Gradual integration and a personalized reception plan based on the minor's needs





THANK YOU!

